

# PROTEOMETER-L KIT™

## AT-LINE TITER + AGGREGATE

The Proteometer-L analyzes titer and relative aggregate content in clarified fermentation broth in under 10 minutes.

The kit is a strategic complement to HPLCs.

It allows scientists in R&D, clone selection, or manufacturing, to better utilize their time by rapidly identifying the molecules capable of making it to the next phase of drug development, increasing efficiency.



Brief Instructional Video



## PROTEOMETER-L WORKFLOW



### Sample Collection

Collect and clarify fermentation broth sample



### Plug & Play Analysis

Attach the Proteometer to your instrument and run samples



### Rapid Results + Accelerated Development

10 minute LC fluorescence of titer and relative aggregate content

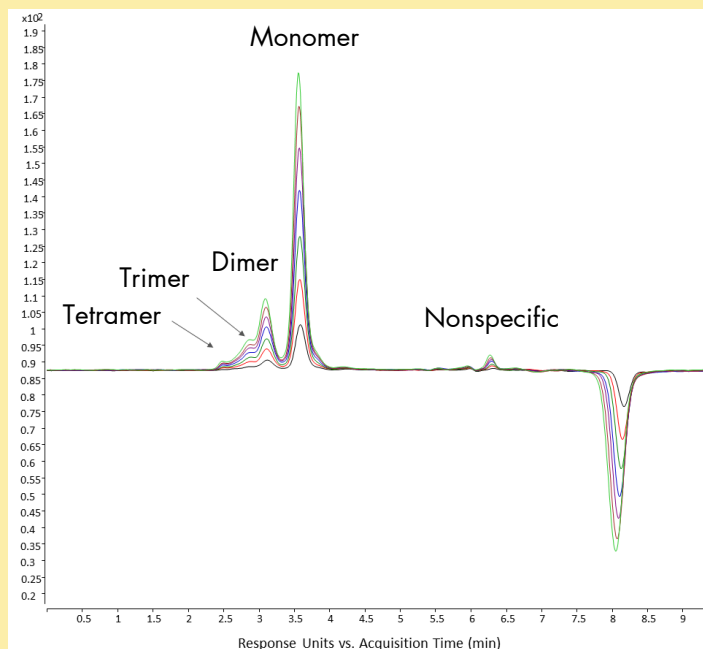
# KIT VARIATIONS



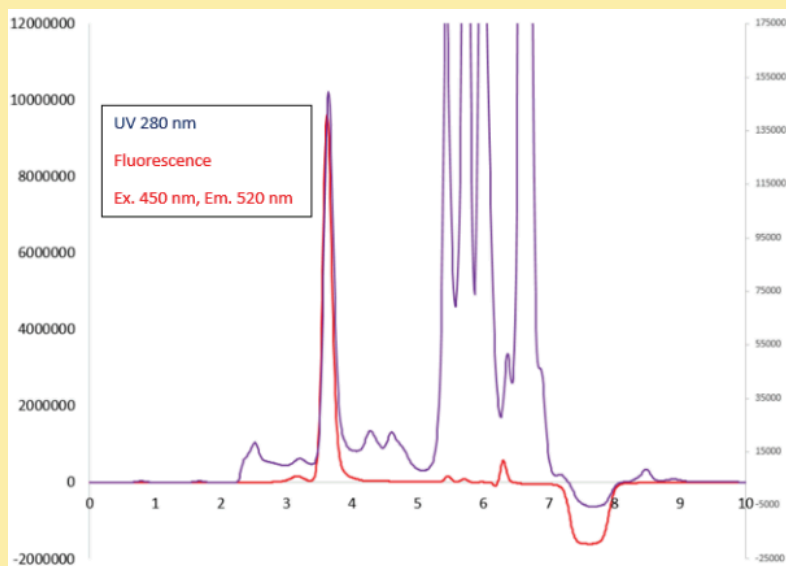
- Proteometer-L Starter Kit: 200 assays
    - Item No. 77775-510
  - Proteometer-L Kit: 1,000 assays
    - Item No. 77775-500
  - Consumables Kit: 800 assays
    - Item No. 77775-506
- Kit components:
- Reactor
  - Reagent
  - Buffer
  - Reconstitution Reagent

## DATA

Titer Determination of bsAb-1 Lead Clone  
Multiple Injections 1mg/mL - 6.8mg/mL



Comparison of UV and FLR chromatograms of  
NIST mAb in Clarified Fermentation Broth



## TESTIMONIALS

"We use the Proteometer-L Kit for the rapid analysis of mAbs and bispecifics for titer and aggregate content from cell-free filtrate samples.

It eliminates sample preparation steps, Protein A purification, and mass spectrometry analysis steps.

Harsha Gunawardena  
Principal Scientist, Johnson & Johnson

"Sample preparation has long been a bottleneck in pharmaceutical research. Every time you touch a sample, you risk compromising it.

The beauty of Novilytic's Proteometer is that it removes this step entirely. It's a groundbreaking innovation yet it is intuitive enough for anyone to use."

Robert Fitzgerald, Manager, Chromatography Portfolio, Avantor