

PROTEOMETER-L KIT[®]

TITER + AGGREGATE

The Proteometer-L Kit analyzes titer and relative aggregate content in clarified fermentation broth in under 10 minutes.

By eliminating the need for sample preparation and method development, the Proteometer-L enables upstream scientists to optimize their time, quickly identifying critical quality attributes.

It pairs with HPLCs and works for all molecules with a human Fc region, such as mAbs, multispecifics, and ADCs.



▶ Instructions



Purchase



PROTEOMETER-L WORKFLOW



Sample Collection

Collect and clarify fermentation broth sample



Plug & Play Analysis

Attach the Proteometer to your instrument and run samples



Rapid Results + Accelerated Development

10 minute LC fluorescence of titer and relative aggregate content

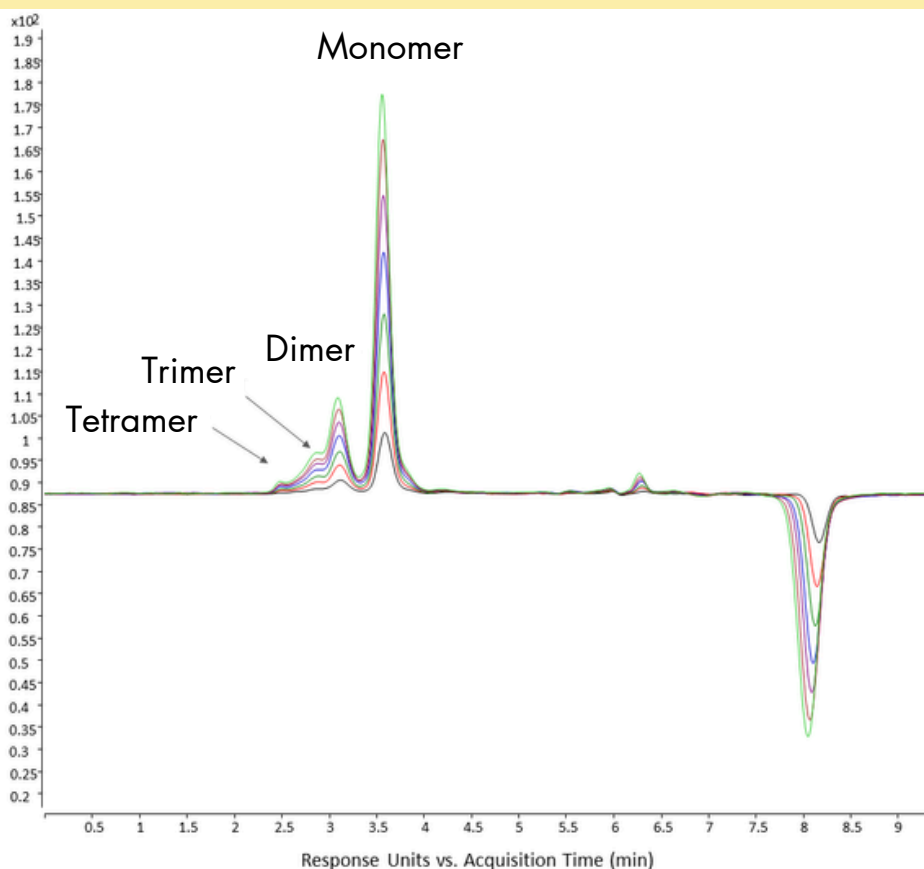
KIT VARIATIONS



- Proteometer-L Starter Kit: 200 assays
 - Catalog No. 77775-510
 - Proteometer-L Kit: 1,000 assays
 - Catalog No. 77775-500
 - Consumables Kit: 800 assays
 - Catalog No. 77775-506
- Kit components:
- Reactor
 - Reagent
 - Buffer
 - Reconstitution Reagent

DATA

Titer Determination of bsAb-1 Lead Clone
Multiple Injections 1mg/mL - 6.8mg/mL



COST SAVINGS

Vs. Protein A + SE HPLC/UV

- Saves \$3.05 per sample

Vs. BLI

- Saves \$2.74 per sample

Costs Avoided:

- Instrumentation (BLI)
- Biosensors
- Protein A tips/columns

TESTIMONIALS

"We use the Proteometer-L Kit for the rapid analysis of mAbs and bispecifics for titer and aggregate content from cell-free filtrate samples.

It eliminates sample preparation steps, Protein A purification, and mass spectrometry analysis steps."

Harsha Gunawardena, Principal Scientist, Johnson & Johnson

"Sample preparation has long been a bottleneck in pharmaceutical research. Every time you touch a sample, you risk compromising it.

Novilytic's Proteometer removes this step entirely. It's a groundbreaking innovation yet it is intuitive enough for anyone."

Robert Fitzgerald, Manager, Chromatography Portfolio, Avantor