

Proteometer-UFT Kit For mAb Ultra-Fast Titer Analysis

Instructions for Use Single-Pump Method (optional)



A. General Purpose of Method

This method describes the determination of titer of therapeutic mAbs and other proteins that contain the Fc domain of human IgG. It is intended primarily to monitor mAb concentration in growth media during clone selection and product development utilizing HPLC systems equipped with a fluorescence detector.

The titer result is mAb dependent and the sample matrix may affect the peak response, therefore, it is recommended that a client-provided reference standard be utilized. However, NmAb in a buffer such as 12.5 mM L-Histidine, pH 6.0 may be used as an alternative reference standard for monitoring changes in mAb titer.

B. Proteometer-UFT Kit Components

1. Proteometer-UFT Fluorescent Reagent (Part no RGN-PL-001): Store at -20 °C until use
2. Proteometer-UFT Buffer (Part no. BUF-PUF-001): Store at room temperature
3. Proteometer-UFT Reconstitution Reagent [dimethylformamide (DMF)] (Part no. REC-PUF-001): Store at room temperature
4. Proteometer-UFT MD Unit (Part no. RCT-PUF-001)
5. Proteometer-UFT Union (Part no. ZDV-PFV-001)
6. Proteometer-UFT Tee (Part no. TEE-PFV-001)

C. Required User Supplied Equipment & Reagents

1. Dual pump HPLC system equipped with refrigerated autosampler, fluorescence detector, and software capable of electronic data collection and processing
2. Client-provided mAb reference material or NIST mAb (NmAb RM 8671)
3. Clarified fermentation broth (CFB) for mAb dilution (mAb-free)
4. Vacuum source for mobile phase filtration
5. Pipet capable of dispensing 20 – 200 μ L
6. Pipet capable of dispensing 100 – 1000 μ L
7. 500 mL beaker
8. Ultra-pure water, 18.2 M Ω cm⁻¹ @ 25 °C, or equivalent
9. Acetonitrile, HPLC Grade or equivalent
10. Microcentrifuge tubes, low binding, 1.5 mL (Eppendorf Cat. No. 0030108442, or equivalent)
11. One 500 mL media bottle, low actinic
12. One 100 mL media bottle, low actinic
13. HPLC autosampler vials, or multi-well plate
14. Filtration apparatus equipped with 0.22 μ m polyethersulfone (PES) membrane, or equivalent

D. Preparation of Mobile Phase UFT-MPf From Supplied Components

One Proteometer-UFT Buffer packet will make 500 mL of mobile phase, which is sufficient for approximately 330 injections.

1. *Preparation of Mobile Phase UFT Component F.* Reconstitute one vial of Proteometer-UFT Fluorescent Reagent (Section B.1) by adding 0.148 mL Proteometer-UFT Reconstitution Reagent (DMF) from ampoule (Section B.3). Gently mix vial contents to dissolve and incubate at room temperature in the dark for at least 30 minutes. This stock solution is now Mobile Phase UFT Component F, and is usable for up to 4 weeks if stored at -15 to -20 °C.
2. *Preparation of Mobile Phase UFT-MPf.* Using scissors, cut open and add one packet of Proteometer-UFT Buffer (Section B.2) to approximately 400 mL ultra-pure water contained in a 500 mL beaker. Ensure quantitative transfer by rinsing out the contents of the packet into the beaker. Stir well until dissolved. Bring the solution to a final volume of 500 mL with ultra-pure water and filter through the 0.22 μ m filter into a 500 mL low actinic media bottle. Add 25 mL of acetonitrile and mix well by swirling. Quantitatively transfer contents of the vial of Mobile Phase UFT Component F (Section D1) to the Mobile Phase UFT-MP in the low actinic media bottle. Mix by swirling. The volume of Mobile Phase UFT-MPf prepared may be scaled, if necessary.

E. Sample and Standard Diluent

Mobile Phase UFT-MPf. is also used as sample and standard diluent. About 70 mL of diluent is sufficient for approximately 330 injections. Therefore, transfer 70 mL of Mobile Phase UFT-MPf to a 100 mL low actinic media bottle for use as sample and standard diluent. The volume of Mobile Phase UFT-MPf saved for use as sample and standard diluent may be scaled as required.

F. HPLC System Conversion – Proteometer-UFT Setup and Equilibration

The HPLC configuration for Proteometer UFT is shown in Figure 1. It is important to keep the dead volume of the system at a minimum by using the zero dead volume connector provided and using minimal length of connection tubing. By minimizing the flow-path, it is ensured that the sample peak is captured within a run-time of 1.5 minutes.

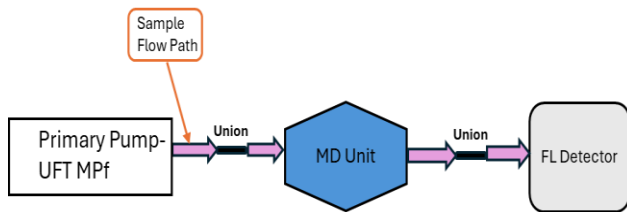


Figure 1. Proteometer-UFT installation

1. Install Mobile Phase UFT-MPf on the HPLC system. Install the MD Unit (Section B.4) on the HPLC system in line with the fluorescence detector as shown in Figure 1.
2. Prime the HPLC pumps and equilibrate the HPLC system at initial method conditions of 0.6 mL/min for approximately 10 minutes.
3. Allow system to equilibrate until baseline is stable with fluorescence monitoring at Ex 552 nm /Em 578 nm. Flow rate may be initially set to 0.1 mL/min until fluorescence signal stabilizes. The complete list of instrument parameters is as follows:
 - Mobile Phase: Mobile Phase UFT-MPf
 - Flow Rate: 0.6 mL/min
 - Maximum Pressure of MD Unit: 1200 psi (82.7 bar)
 - Mode: Isocratic
 - Column Oven Temperature: Ambient
 - Auto-Sampler Temperature: 4°C
 - Injection Volume: 1-50 μ L, constant for all samples in a run
 - Run Time: 1.5 minutes
 - Fluorescence Wavelength Settings: Excitation 552 nm / Emission 578 nm
 - Detector Settings: Factory Default

G. Preparation of mAb Samples, Standards, and Controls

mAb samples: Fermentation broth may be collected at desired time points from a mAb production run prior to, or in parallel with, the analyses. Please use the method that you would normally use to remove the cells/clarify the broth. You may store each day's CFBs in aliquots as you typically would until the day of analysis. Before transferring to an autosampler vial, centrifuge at 2000 x g for 30 seconds to remove any particulates.

mAb-free CFB control: Please note that you will also require an aliquot of mAb-free CFB as a control to monitor interference from non-mAb broth components (Blank B). mAb-free CFB may be obtained from a culture transformed with empty vector or by depleting mAb from an aliquot of the test CFB using immobilized Protein A in batch mode. Prior to use, CFB should be centrifuged at 2000 x g for 2 minutes to remove any particulates.

CFB may be viscous. Use care when pipetting CFB.

Samples may be injected from autosampler vials or multiwell plates. Sample and Mobile Phase UFT MPf are mixed in the ratio 1:10 (v/v). The total volume of the mixture in a vial or plate well may be adjusted as desired.

Prepare controls, standards and samples as follows:

1. **Controls:**
 Blank A: 200 μ L of Mobile Phase UFT-MPf (Section E)
 Blank B: A mixture of 20 μ L of mAb-free CFB plus 200 μ L Mobile Phase UFT MPf
 Blank C: If the standard is prepared in buffer, a mixture of 20 μ L of this buffer plus 200 μ L Mobile Phase UFT MPf is used as Blank C
2. **Standards:** Prepare standards at concentrations that bracket the estimated sample concentration (e.g. 0.3 to 5 mg/mL). Standard solutions should be prepared using client-provided mAb reference material (or NIST mAb) diluted with mAb-free CFB. Place a mixture of 20 μ L of each standard mAb solution plus 200 μ L Mobile Phase UFT MPf in an autosampler vial or plate well to perform desired injections
3. **Samples:** Place a mixture of 20 μ L of each test sample plus 200 μ L Mobile Phase UFT MPf in an autosampler vial or plate well to perform desired injections

H. Verification of Instrumental Parameters (Fluorescence Detector Settings)

Each detector has its own strength of fluorescent signal which is dependent on factors such as instrument make and age of detector and lamp. Prior to testing on each system, the response of the mAb must be evaluated to ensure the dynamic range is linear for your samples.

The same Injection volume (50 μ L recommended) must be used for this step and for data acquisition.

1. Perform injections of Blank A (or C, if applicable). Evaluate the chromatograms and if peaks are present in Blank A (or C), take appropriate measures to clear the system of potential contaminants.
2. Perform repeated injections of mAb in CFB (Section G.2) at the selected injection volume at the highest μ g load you expect to observe in your samples (no greater than 23 μ g), adjusting detector settings after each injection, until the signal is maximized without saturating the detector. This should be your detector setting for the duration of testing.

I. Data Acquisition

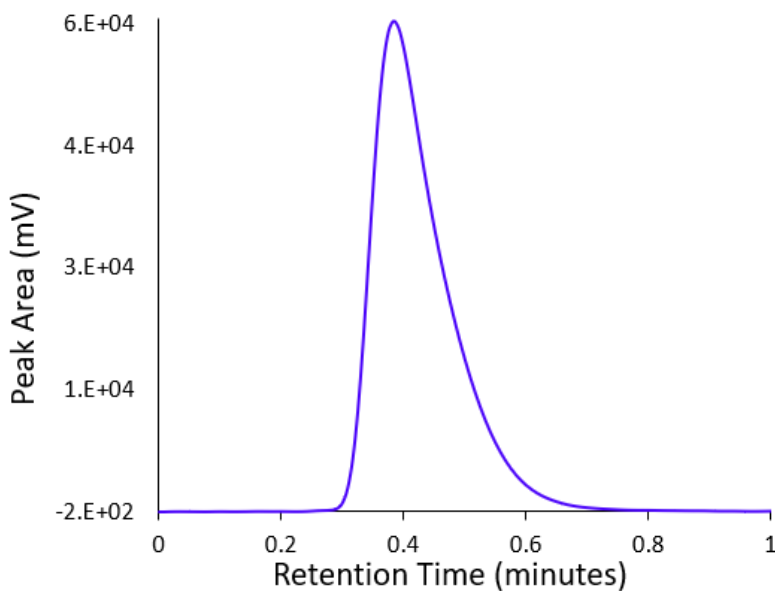
At constant injection volume (50 μ L recommended),

1. Generate a standard curve for titer analysis by injecting Blank B and the prepared mAb standards (Section G.2) such that the amount of mAb injected is between 1.4 and 23 μ g.
2. Inject samples (Section G.3) from desired time points. Sample concentration may be adjusted by dilution with Mobile Phase UFT MPf, if necessary, to fall within established linear dynamic range.

J. Processing and Reporting

1. Evaluate chromatograms from Blank B. Peaks present in Blank B at these elution times must be subtracted from the corresponding sample peak area.

2. Create a processing method to consistently integrate peaks in all injections of your mAb. Elution times are dependent on the HPLC system in use.
3. Use the standard curve (Section H.1) to calculate the concentration of the mAb in the unknown fermentation samples,



Example Chromatogram: NIST mAb at 25 µg load

K. Proteometer-UFT MD Unit Extended Storage Conditions

Flush with copious amounts of ultrapure water maintained at a low flow rate to avoid excessive backpressure. Force air into the tubing with an empty syringe to displace the water, and store in a closed container.

Ordering Information

Description	Part Number
Proteometer-UFT 300 Inj Kit (1 reagent vial, 1 buffer pack, MD Unit, Tee, 2 Unions)	KIT-PUF-002-01
Proteometer-UFT 1000 Inj Kit (4 Reagent Vials, 4 buffer packs, MD Unit, Tee, 2 Unions)	KIT-PUF-010-01
Proteometer-UFT MD Unit	RCT-PUF-001
Proteometer-UFT Tee	TEE-PFV-001
Proteometer-UFT Union	ZDV-PFV-001
Proteometer-UFT Buffer	BUF-PUF-001
Proteometer-UFT Reagent	RGN-PUF-001
Proteometer-UFT Reconstitution Reagent (DMF)	REC-PUF-001

Novilytic, LLC
 1281 Win Hentschel Blvd.
 West Lafayette, IN 47906 USA
novilytic.com/shop
 T: 1.765.631.3100 (M-F 9A-5P EST)